

FALL & WINTER 2024



# Your Local Store for **AGRICULTURE** Parts, Tools, & Shop Supplies

REGINA: (306) 525-2551  
YORKTON: (306) 783-6515  
ESTEVAN: (306) 634-3664  
WEYBURN: (306) 842-4676  
MAINLINE FLEET: (306) 721-7711

## M18 FUEL™ Blower *BLOWER ONLY*

- POWERSTATE™ Brushless Motor delivers a constant 500 CFM, 120 MPH, and 12.2 N of blow force
- No Gas Headaches: No Pull Start, No Engine Maintenance, Low Noise, No Emissions, Less Vibration
- Optimized balance and ambidextrous sliding lock-on
- Up to 40% quieter than competitors at only 54 dB(A)
- Nozzle attachment capable
- Reaches full throttle in under one second
- Fully compatible with the M18™ System
- Variable Speed Trigger



**MLW 3017-20**  
*While Supplies Last*

*Super Lightweight  
High Output  
Lithium-ion*

## JUMP STARTERS

*Ask your sales representative  
which jump starter is right for you!*

- Reverse polarity protection
- Low voltage & short circuit protection
- Overheat & over-discharge protection

**2500 A**  
G2S GDL-JP-2500

**5000 A**  
G2S GDL-JP-5000

**10,000 A**  
G2S GDL-JP-10000



**PARTS**

**AUTOBODY SUPPLY**

**INDUSTRIAL**

**REGINA**

**YORKTON**

**WEYBURN**

**ESTEVAN**

# Quality Rotating Electrical In Stock!

## WILSON

## BOSCH



### 30" Foam Double Edge Squeegee

4" twin blades.  
Handle sold separately.

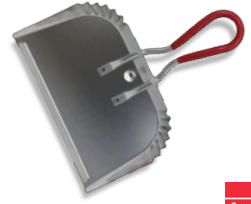
PBP 83-304 | Squeegee  
PBP 85-978 | Handle



CARRAND

### 17" Contractors Dust Pan

This contractor-grade dustpan is made of heavy-duty aluminum, so it's sturdy yet light, and easy to use and store. Rubber coated handle is 9" long. Heavy-duty aluminum dustpan is 17" wide. Grooved edges for broom and brush cleaning.



CARRAND

GAR 84630

### Brooms

#### Heavy Duty Corn Broom

Indoor/outdoor use.



GAR 84578

CARRAND

#### Maroon Durastran Broom

- Wet/dry sweeping
- 3" polystyrene bristles
- For concrete and asphalt
- 24" long with handle

PBP 92-262

CARRAND

#### Indoor/Outdoor Push Broom

- 24" Polypropylene push broom head with handle
- 3" acid-resistant bristles
- Wet/dry sweeping

PBP 92-232

CARRAND

#### Tampico & Steel Broom

- 3" bristles
- Center row of steel bristles
- Acid-resistant
- 24" long, comes with handle

PBP 92-282

CARRAND

### Steel Tray Wheel Barrow

Transport dirt, mulch, gravel, tools and other materials easily with the True Temper contractor wheelbarrow. It has a 6 cu. ft. tray with a maximum capacity of 270lb.



CARRAND

Clearance - Limited Quantities while supplies last

GAR 01044

### 9" Sidewalk Scraper

Cut easily through layers of ice and hardened snow thanks to the Garant industrial-grade sidewalk scraper designed for professionals.



GAR 80657

CARRAND

### Round Point Shovel

Equipped with a forward-turned footstep to provide you with better comfort. Designed for residential use, this tool is ideal for people looking for excellent quality/price.



GAR 00197

CARRAND

### Grain Shovel

Supplied with tubular fiberglass handles for light weight and strength. Aluminum blades are riveted to handle. Ribbed blade to add extra strength.



HJU 511172

CARRAND

### Square Point Shovel

The square point shovel is ideal for scooping and moving dirt, gravel and other landscaping material. Solid ash handle is stained to help prevent chipping and water damage. Blade width 10.5".



ADC TGHS2L

CARRAND

### Shovels

#### Ergonomic Snow Shovel

- Allows better posture
- Large and deep blade
- 53.5" x 18"



GAR 78521

#### Snow Pusher

- 24" aluminum handle



GAR 78522

#### Ergonomic Snow Pusher

- Lightweight
- Allows better posture
- Meant for large surfaces



GAR 78523

#### 36" Snow Pusher

- Lightweight
- Large blade
- Improved posture



GAR 80773

CARRAND

PARTS

AUTOBODY SUPPLY

INDUSTRIAL

REGINA

YORKTON

WEYBURN

ESTEVAN



# WIX<sup>®</sup>

## FILTERS



*For all of your filtration needs!*

### Nitrile Coated Gloves

- 13 Gauge polyester
- Shell colour: grey
- Palm colour: black
- Improved grip and dexterity



ADC TGG-200-08 | M  
ADC TGG-200-09 | L  
ADC TGG-200-10 | XL



### Red Baron Gloves

- Heavy sherpa lining
- Full-grain cowhide leather
- Cotton drill back
- Shirred elastic wrist
- Slip-on style safety cuff



WAT 94002 | S-3XL

### Flex Time Gloves

- 3M Thinsulate™ C40 lining
- Dryhide™ water-resistant full-grain goatskin leather palm
- Hooded fingertips, thumb reinforcement, spandex back
- Snug-fitting elastic wrist with secure Velcro® closure



WAT 9005W | S-2XL



### Safety Glasses

Soft adjustable nosepiece to help reduce slippage. Incorporates dual-material temples to provide cushioned comfort plus enhanced style and features. The proprietary 3M™ Pressure Diffusion Temple Technology that helps to diffuse pressure over the ear.



MMM SF401AF-CA



### Anti-Fog CCS Protective Eyewear

Foam Gasket helps limit eye exposure to nuisance dust and other particles while providing additional cushioning. Anti-fog lens coating and removable foam lined gasket with airflow vents. Polycarbonate lenses absorb 99.9% UVA and UVB. Meets the requirements of CSA.



MMM 11872



### Industrial Grade Duct Tape

Composed of a waterproof polyethylene film over cloth scrim backing with a rubber adhesive used for demanding applications. Offers high tack, conformability, strength and easy tear. The individual roll wrap preserves integrity of the roll for less waste. Features good moisture resistance and has good tensile strength.



MMM 06975



### Tesa 51036 PET Cloth Wire Harness Tape

Black 3/4" x 25M. Tesa PET cloth wire harness tape with an advanced acrylic adhesive.

- Flag resistant
- High temperature resistance 150°C/3000h
- Excellent abrasion, chemical and fluid resistant
- Large 19mm x 25M rolls



LWR 51036



### PRO-LINE XT

Fast drying and highly visible. Wear, weather, and chemical resistant, this paint marker is meant for rough, rusty, and dirty surfaces.

- MKL 097250 | White
- MKL 097251 | Yellow
- MKL 097252 | Red
- MKL 097253 | Black
- MKL 097254 | Blue



### SILVER-STREAK Metal Marker

Ideal when highly-visible, torch-resistant marks are required during metal layout and fabrication work. The unique reflective lead is more visible through a welder's filter plate and will not rub, burn or blow off like soapstone. Marks on all metal surfaces including oily or wet.



- MKL 096107 | Holder with 6 Refills
- MKL 096007 | 6 Refills ONLY



### Fast Orange Hand Cleaner



Pure, orange scented natural citrus power does the cleaning. Fortified with aloe, lanolin, glycerin, and other skin conditioners.



- PER 23218 | 3.8L Smooth
- PER 25219 | 3.8L Pumice

### Fast Orange Hand Wipes

Removes the toughest grease, tar, grime, ink, paints, sealants, adhesives and other difficult soils. 72 wipes per container.



PER 25051

### Rodents Away

- Odorless, all-natural repellent
- Does not cause injury or harm
- Six 40g packets



ROD 19471

**PARTS**

**AUTOBODY SUPPLY**

**INDUSTRIAL**

**REGINA**

**YORKTON**

**WEYBURN**

**ESTEVAN**

The safest, most durable, and efficient industrial hoses, couplings, accessories, and equipment.



### Box of Rags

In a 20lb box or bale. Great for economical clean ups in the shop or home. Absorbs greases, oils, and more.

- RBW 24020** | Box of Fleecy Rags
- RBW 24020BALE** | Bale of Fleecy Rags
- RBW 60020** | Box of White Ganzies Rags



### Garbage Bags

Multiple sizes available to suit all your needs.

- ADC TGGB2636XS** | 26" x 36" | 125/case
- ADC TGGB3550XS** | 35" x 50" | 100/case
- ADC TGGB4248XS** | 42" x 48" | 75/case
- ADC TGGB5050XS** | 50" x 50" | 100/case



### Qualisorb

The most efficient way to soak up liquid spills. Pallet quantities are pick-up only.

**Buy in bulk and save!**

**QUA 628**



### 3 Piece Funnel Assortment

Made of tough, high-density polyethylene for dispensing petroleum-based fluids. May be used with substances such as oil, radiator fluid or fuel additives. Includes: 1 gray 1/2-pint, 1 charcoal 1-pint, and 1 black 2-quart.

**BLI 05068MI**



**BL-TZ**

### 7 Quart Catch All Pan

- 7-quart capacity with drain scale that helps track oil usage
- Unique oversized pouring spout
- Lightweight and stackable
- Built-in raised rim handles
- Multi-purpose use

**BLI OP-1**



**BL-TZ**

### Giant Quick Funnel

Has an easy grip guard that makes pouring safe and easy. Includes a snap-in screen. Applications include fuel and oil for marine use, tractors, and trucks. Innovative and sturdy design.

**BLI 10705**



**BL-TZ**

### Fuel Filter Funnel

With a 5 gal/minute flow rate this fuel filter removes water, dirt and debris. Filters gasoline, heating oil, and kerosene, as well as 2 cycle mixed gas.

**BLI F8C**



**BL-TZ**

### Cable Ties

Cold weather black cable ties. 100pc each.

- PIC 7295-36** | 7.5"
- PIC 7296-36** | 11"
- PIC 7297-36** | 14"
- PIC 7298-36** | 14" (120lbs)



### Tarps

Waterproof and resistant to chemicals, tearing and mildew.

- Weave: 10 x 10
- GSM: 135
- Material: High density polyethylene
- Aluminum grommets every 3'
- Polyethylene Rope Reinforced Hems

- ADC TARP-1015-BLUE** | 10' x 15'
- ADC TARP-1520-BLUE** | 15' x 20'



### Cold Weather Tarp Straps

Tie down strap made of rubber. Injection molded EPDM (no imperfections). 2-1/2 times safe stretch, non-cracking. Meets DOT safe working load limit. Operational to -40°C. Stamped with 50 lb SWL as required by DOT.

- HJU SH09CO** | 9"
- HJU SH15CO** | 15"
- HJU SH20CO** | 20"
- HJU SH30CO** | 30"



### Ratchet Straps

Allows loads to be secured with maximum holding force and includes steel coated S-Hooks.

- Breaking Strength: 3000 lbs
- Working Load Limit: 1000 lbs

- ADC RS-102** | 1" x 16'
- ADC RS-103** | 1" x 20'



### Ratchet Strap 2" x 27'

- Double J-hooks
- Heavy-Duty ratchet tie-down
- Yellow nylon woven straps
- Breaking Strength: 11 000 lbs
- Working Load Limit: 5000 lbs

**ADC RS-227-CE**



**PARTS**

**AUTOBODY SUPPLY**

**INDUSTRIAL**

**REGINA**

**YORKTON**

**WEYBURN**

**ESTEVAN**

Gates Automotive V-Belts are designed to wear evenly to prevent belt slippage and to extend service life of the most demanding engine drives.



### Anaerobic Gasket Maker & Sealant

Flexible, gasketing material for use on rigid machined flanges with less than .015" gap. OEM approved use where OE specify "anaerobic" gasket (cures in the absence of air). Withstands temperatures to 300°F (149°C). Eliminates preformed, pre-cut, paper, rubber and cork gaskets. Flexes with flanges that move in service.

- PER 51550 | Flange sealant, 50ml
- PER 51580 | Flange sealant, 300ml
- PER 51845 | Gasket maker, 300ml



### Threadlocker

OEM specified. A permanent, high strength product applied to fasteners 3/8" to 1" (10mm to 25mm) in size before assembly. Designed for securing parts that must withstand heavy shock, vibration, or extreme chemical or environmental conditions. Localized heating and hand tools are required to separate parts. Conforms to ASTM D5363 AN0331 (Mil-S-46163A, Type II, Grade O).

- PER 24240 | Blue, 36ml
- PER 26240 | Red, 36ml



### Threadlocker Gel Twist

OEM specified. Gel formula provides "liquid-reliability" without drips, globs, mess or waste. High strength threadlocker for heavy-duty applications 3/8 inch to 1 inch (10mm to 25mm). Adds 3,000 PSI holding power on slip and press fit assemblies. Replaces set screws and snap rings. Locks against vibration loosening. Conforms to ASTM D5363 AN0221 (Mil-S-46163A, Type I, Grade K).

- PER 24215 | Blue, 36ml
- PER 27115 | Red, 36ml



### IronTite

Stop leaks in coolant systems, seal minor cracks in cylinder heads & blocks. Used by professionals for over 35 years. Comes in a 455ml bottle.

- IRT 913216 | All Weather Seal
- IRT 911216 | Thoro-Flush



### Super Clean Cleaner-Degreaser

Works on contact - quickly removes grime, oil, wax, dirt and tar. Industrial strength with biodegradable detergents. Easily tackles household, automotive and shop tasks.

- SCL 101780 | 32oz.
- SCL 101723 | 3.75L
- SCL 101724 | 9.5L
- SCL 100725 | 18.9L
- SCL 100727 | 209L



### Citrol Degreaser

Rapidly penetrates and removes a wide range of soils, dirt, and inks. Contains no petroleum or chlorofluorocarbon-type solvents. Smells pleasantly of citrus!

- NSI 266 | 16oz.



### Trans Tune Treatment

Helps fluid systems work smoother & last longer!

- Use in automatic transmissions, hydraulics, or power steering fluid systems
- Works fast to dissolve sticky fluid gum & varnish
- Safe for conventional & synthetic fluids



- Buy in bulk and save!
- SFC TT16 | 16oz.

### Glass Kleen

Ideal for auto, marine, fleet and home use. Cleans windows, mirrors, formica and porcelain. Specially formulated for body shops and industrial use.

- KLF 885 | 550g



### Non-Chlorinated Power Jet

The newest non-chlorinated brake parts cleaner for Canada from the #1 brand. Specially formulated to remove even the strongest contaminants from brake linings and pads.

- CRC 1752253 | 41g



### Freeze-Off

Immediately drops the temperature of the area in direct contact with the spray. The freezing effect cracks rusted surfaces, allowing it to reach deeper & work more effectively than other penetrants.

- CRC 75222 | 326g



### Deep Creep

Works fast to break metal surface tension. Frees stubborn parts from rust & corrosion. Use to oil bushings, chains, gears, hinges, rollers & slides.

- Buy in bulk and save!
- SFC DC14 | 12oz.



PARTS

AUTOBODY SUPPLY

INDUSTRIAL

REGINA

YORKTON

WEYBURN

ESTEVAN

## Knock'er Loose

An industrial strength, low viscosity super penetrant designed to quickly loosen and free seized, bound or frozen fasteners. Quickly permeates rust, scale, gum, grease and corrosion.

CRC 73020 | 16oz.



## Aero-Kroil

Wherever there is corrosion either due to heat, salt water, chemical action, or weathering- Kroil will loosen metal joints saving labor, equipment and temper. Dissolves gum, dried grease and oil, removes rust and carbon deposits without attacking the metal.

KAN KS102FR | 10oz.  
KAN KL011FR | 1 Gallon



## MAG1 Lubricants

ALL PART NUMBERS PRECEDED BY PMO MAG



SAE 15W-40 Engine Oil

SAE 5W-40 Full Synthetic

Hydraulic Fluid - ISO 22

Hydraulic Fluid - ISO 32

Part Number

Quantity

62631

1 GALLON

67980

5 GALLONS

67983

55 GALLONS

62627

1 GALLON

68036

5 GALLONS

68037

55 GALLONS

65847

5 GALLONS

00325

## Air Induction Spray

Cleans & lubricates critical upper engine areas where fuel cleaners can't reach.

SFC SS14 | 12oz.



## Tool Box Buddy

- Long lasting, waterproof lubricant
- Super slick - allows air tools to run easier and last longer
- Pure petroleum combats rust and varnish
- Small package fits anywhere

LUC 10070 | 2oz.



## Gun Oil

- Odorless
- Prevents jamming and overheating
- Resists evaporation
- Penetrates rust and protects from rust, wear and moisture
- Neutralizes acid from fingerprints

LUC 10006 | 2oz.



## Dry Graphite Lubricant

Ideal where a dry lubricant is required or where petroleum products must be avoided. Resists dirt, dust and oil build-up. Wide effective temperature range up to 850°F constant.

CRC 75101 | 16oz.



## Disposable Butane Cylinder

- 5.5 oz. aerosol can
- For use with Bernzomatic butane torches
- Can be used for fueling all leading butane cigarette lighters

ADC BZBF56 | 156g



## 4+ Furnasafe

- Prevents water from accumulating
- Safely removes water from condensation
- Cleans nozzles & provides hotter flame
- Reduces foaming on tank refills

DSG FS32 | 946ml



## Compressor Oil

Helps promote longer life in all types of reciprocating & rotary compressors. Solvent refined & clay filtered for long lasting, anti-foul operation. Cleans valve seat deposits & extends life.

CRC 75133 | 3.78L



## Heavy-Duty Oil Stabilizer

- Lowers oil temperature in any engine, reduces leaking, knocking and blow-by in worn engines
- Helps to control noise, overheating, leaks and wear in gear boxes
- 100% petroleum product
- Virtually eliminates dry starts and wear
- Extends oil life

LUC 20002 | 3.78L



## Motor Treatment

- Cleans fuel injectors, carburetor passageways, intake valves, and chamber deposits
- Lubricates upper cylinders
- Stabilizes gas & diesel fuels up to 2 years

Buy in bulk and save!

SFC SF16 | 16oz.  
SFC SF128 | 1 Gallon



## 4+ Premium

Prevents costly fuel pump and injector repairs. A comprehensive multi-purpose fuel enhancer that addresses eight critical fuel performance issues to reduce fuel consumption and extend fuel system, engine and diesel particulate filter life.

DSG FPP16 | 455ml  
DSG FPP32 | 946ml  
DSG FPP4L | 4L



## Diesel Fuel Conditioner

Eliminates varnish and sludge. Reduces corrosion. Prevents stalling and frozen fuel lines. Retards wax formation. Contains anti-gel properties.

KLF 992 | 500ml  
KLF 993 | 1L  
KLF 991 | 150ml Clearance item!



PARTS

AUTOBODY SUPPLY

INDUSTRIAL

REGINA

YORKTON

WEYBURN

ESTEVAN

### 4+ Diesel Melt

An emergency fast-acting anti-gelling treatment additive that is recommended for fuel that has already gelled.

DSG DM16 | 455ml  
DSG DM32 | 946ml



### 4+ Polar Max

Super concentrated fuel additive to stop diesel fuel from gelling during winter. Use summer fuel in the winter and save!

DSG PM32 | 946ml



### 4+ Arctic Plus

A comprehensive multi-purpose winter diesel additive with anti-gel that addresses critical performance issues. It reduces fuel consumption, extends fuel system, engine & diesel particulate filter life.

DSG AP16 | 455ml  
DSG AP32 | 946ml



### 4+ Turbo Charger Cleaner

Designed for diesel engines to reduce Turbocharger replacement and to maintain performance. All season application to reduce accumulation of carbon, soot, and frees sticking vanes in turbochargers.

DSG FPPTC32 | 946ml



### Diesel Exhaust Fluid

- Non-flammable
- Freezing point of -11°C
- Shelf life: 12 months
- Non-hazardous
- Non-toxic
- Shelf life: 12 months

Buy in bulk and save!

REC 55-126AIRX96 | 9.46L



### Roloc Holder and Discs

A rugged, plastic holder with quick release attachment. 1/4 inch (6 mm) shank works on standard power tool collet systems. Discs sold separately.

MMM 07500 | Holder  
MMM 07480 | 2" Coarse Disc  
MMM 07481 | 2" Medium Disc



### General Purpose 6" x 9" Pads

- Superior alternative to steel wool, wire brushes, sandpaper, and other non-woven products for cleaning or finishing tasks
- Very fine grade aluminum
- Oxide abrasive cleans, finishes, grains, denibs, and defuzzes

MMM 07447



### Extra Heavy-Duty All Weather Locking Extension Cords

- 12/3 SJEOW
- Outstanding performance in extreme climate conditions at temperatures from -50°C up to +105°C
- Superior resistance to oil, moisture, ozone, cracking, abuse, and wear

ADC LT530825 | 25'  
ADC LT530830 | 50'  
ADC LT530835 | 100'



### Fire Extinguishers

#### 2.5lb ABC

Automotive dry chemical single use unit with Vehicle Bracket 1A:10BC.



SHD 13315DAUT



#### 10BLB Pro 480

For both common combustible and flammable liquid fires. Fulfills the NFPA's requirements for business use. Comes with metal wall hook 4A:80BC.



SHD 11340R



### Cut Off Wheels

Multiple sizes available.

PFD 69834 | 3" x 0.045"  
PFD 69817 | 4.5" x 0.030"  
PFD 69818 | 5" x 0.030"



### CC Grind Disc

- Diameter: 4-1/2"
- Bore: 7/8"
- Max RPM: 13300 RPM
- Compatible mounting flange set: EDP 69116 (5/8-11)

PFD 61200



### Chop Saw Wheel

- 14" x 3/32"
- 1" AH A 36 K PSF-CHOP
- 4400 RPM

PFD 64492



Buy more, save more! Case specials on quality anti-freeze available. Stock up before winter comes! Each case contains 4 - 3.78L jugs.

### Heavy-Duty Diesel Universal Anti-Freeze

### Heavy-duty Extended Life Anti-Freeze

#### REC 16-474

- 50/50 Premix



#### REC 16-284

- Fully formulated concentrate



#### REC 16-324

- 50/50 premix
- No need to add water



#### REC 16-314

- Mixed fleet long life anti-freeze concentrate for all engines



PARTS

AUTOBODY SUPPLY

INDUSTRIAL

REGINA

YORKTON

WEYBURN

ESTEVAN

## M18 Cordless 2-Speed Grease Gun Kit

Milwaukee

- 10,000 PSI max operating pressure and 10 oz/Minute flow rate
- Pre-set grease counter dispenses precise amounts
- Run time: up to 10 grease cartridges per charge
- Air bleeder valve for quick priming
- 2 speed design
- Lock-on/Lock-off trigger
- Includes battery, charger and case



MLW 2646-21CT

## Chrome Finish Adjustable Wrench

- Chrome Vanadium Steel for strength and durability



ADC IDI-AW10 | 10" Length | 1-5/16" Jaw Width

TYPE GRADE

## Wrench Sets

- Chrome vanadium steel alloy for strength and durability
- Polished mirror finish for quick cleaning
- 12 point design minimizes fastener damage and increases torque
- Premium canvas pouch
- 22pc comes in 7mm-32mm Metric
- 16pc comes with 1/4"- 1-1/4"



ADC TGCW-SET-16PC | 16-piece  
ADC TGCW-SET-22PC-MET | 22-piece

TYPE GRADE

## Ice Melt

- All Natural Ingredients
- Gentle on the Environment
- Harmless around children and pets
- Fast acting & powerful to -29° C (-20° F)
- Safer on concrete
- Anti-corrosive formula



ADC ARCTIC-ECO-GR | 22lb  
ADC ARCTIC-ECO-GRN | 44lb

## Jump-N-Carry 12V Jump Starter

The Jump-N-Carry JNC660 1700 Peak Amp 12 Volt Jump Starter is a favorite piece of equipment!

- 1700 peak ampere
- Battery status indicator gauge
- 46 inch heavy-duty #2 cables
- DC outlet to power 12 volt accessories

JUMP n Carry



G2S SOL-JNC660

## Magnetic Tip Screwdrivers

- ADC TGSD1101 | #1 Phillips
- ADC TGSD1204 | #2 Phillips Stubby
- ADC TGSD1301 | #3 Phillips
- ADC TGSD3101 | #1 Robertson Stubby
- ADC TGSD3204 | #2 Robertson Stubby
- ADC TGSD3301 | #3 Robertson
- ADC TGSD5101 | 3/16 Slot
- ADC TGSD5204 | 1/4 Slot Stubby



TYPE GRADE

## Curved Locking Jaw Pliers

- Chrome vanadium steel hardened for maximum strength and durability
- Curved jaws, knurled tips and wire cutters
- Bare metal handle
- Instantly locks



ADC TGHT-030-007 | 7" | 1.14" max  
ADC TGHT-030-010 | 10" | 1.46" max

TYPE GRADE

## Circulating Heater - 8000 Series

- Has a male plug and is made of aluminum
- CSA-certified
- Has a hose inlet and outlet diameter of 5/8 inches
- 120 volts, 12.5 amps, and 1,500 watts



TEM 330-8003

PHILLIPS & TEMRO industries

## Circulating Heaters - 41 Series

- Opens at 190°F and closes at 151°F
- Includes a 5' heavy-duty three-wire attached cord
- Width and height of 8 1/2 inches
- Hose inlet and outlet diameters are 5/8 inches
- 120 volts, 1000W or 1500W, CSA-certified



TEM 220-4029 | 1000W  
TEM 220-4037 | 1500W

PHILLIPS & TEMRO industries

## Quick Start - Group 75 Dual Terminal Battery

- Affordable power for the value-minded driver
- Ready and reliable for long service life
- 18-month warranty



ISB QS-75DT18

INTERSTATE BATTERIES

## Quick Start - Group 31 Batteries

- Affordable power for your commercial needs
- Durable design for the long haul
- 12-month warranty



ISB QS-31A12-P8 | Top Post  
ISB QS-31T12-P8 | Top Stud

INTERSTATE BATTERIES

Quantities are limited while supplies last. Some items may require ordering. Prices are subject to change without notice.

PARTS

AUTOBODY SUPPLY

INDUSTRIAL

REGINA

YORKTON

WEYBURN

ESTEVAN