

May & June 2026



Your Local Store for

AUTOMOTIVE

Parts, Tools, & Shop Supplies

REGINA
(306) 525-2551

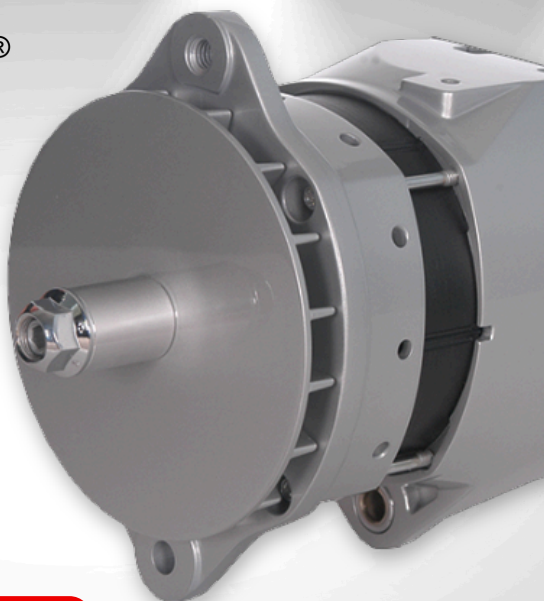
YORKTON
(306) 783-6515

ESTEVAN
(306) 634-3664

WEYBURN
(306) 842-4676

MAINLINE FLEET
(306) 721-7711

EMERALD PARK
(306) 993-1629



AVAILABLE NOW

HEAVY DUTY

STARTERS & ALTERNATORS

2026 Spring

Wiper Blade Promotion

 **BOSCH** Direct Fit

Part Numbers | 40513-40522

Part Numbers | 40524-40528

PERFECT VIEW Wipers

Part Numbers | PV13C - PV28C

All orders of **30 or more blades** in either series or combined qualifies for a **wall mount or rolling floor display at no charge!**

REFRIGERANT AVAILABLE NOW

10lb Keg Solstice yf

Part Number: REF R1234YF-200

30lb Keg Freon

Part Number: REF R134A-200

Core charges on refrigerant apply. Contact your Sales Representative for more information.



REGINA

YORKTON

ESTEVAN

WEYBURN

EMERALD PARK



**AUTOMOTIVE PARTS
AUTO BODY SUPPLY**

**TOOLS & EQUIPMENT
INDUSTRIAL & SAFETY SUPPLY**

CPS® 14mm Manual Coupler Sets



R-134A Set

- Six latching balls
- Set includes low & high side couplers

HFO1234yf Conversion Set

Convert older R-134a manifolds to use with HFO1234yf.

- 1 each, right hand threads:
 - 1/2" ACME Male
 - 1/2" ACME Female
- AD88L HFO Tank adapter
- 6 latching balls



Part No.	Description
CPS QC134SET	R-134A Set
CPS QC1214-SET	HFO1234yf Conv. Set

CPS® Manifold Gauge Sets

- Gauge Size: 3-1/8"
- Hoses: 6ft (3)
- Each set includes two sets of manual couplers & carrying case



Part No.	Refrigerant	Fittings
CPS MT717A6Q	R-134a	1/2" ACME
CPS MTHFO134	R-134a, R-1234yf	1/4" SAE

Compute-a-Charge Refrigerant Scale

CPS CC220

- 220 lb (100 kg) capacity
- 0.25 oz (10 g) resolution
- Cylinders: 30/50/90/125 lb
- Automatic Shut-off
- Unit weight: 6 lbs



CPS®

VIEW Spotgun™ A/C Oil Injection

Injection Kits

UVW 471500A



Comes with PAG 46 HFO oil cartridge

UVW 481500
UVW 481500YF



UVW 490200

Injection Master Kit includes:

- SpotGun® Injector
 - with Purge Valve Adapters
- R-134a and R-1234yf Couplers
- (2) SpotGun® Service Hose Assemblies
- (1) Universal Oil Cartridge (8 oz/240 ml)
- (1) ExtenDye™ Cartridge (8 oz/240 ml)
- UV Phazer™ Black
- UV Enhancing Glasses

A/C ExtenDye™: a super-concentrated UV dye that reduces wear, extends component life, and improves the efficiency of the A/C system.

Part No.	Description
UVW 471500A	Spotgun™ A/C ExtenDye Injection Kit - R12 & R-134A
UVW 481500YF	Spotgun™ Oil Injection Kit - R1234yf
UVW 481500	Spotgun™ Oil Injection Kit - R-12 & R-134A
UVW 490200	Spotgun™ Injection Master Kit

8oz. Oil Cartridges

Part No.	Description	PAG
UVW 488046P		46
UVW 488100P	Spotgun™ Oil Cartridge	100
UVW 488125P		125
UVW 488150P		150
UVW 488046PBD	A/C Oil	46
UVW 488100PBD	A/C ExtenDye	100



A/C Leak Detection



LDA1000UV

EW50395



Part No.	Description
CPS LDA1000UV	Refrigerant Leak Detector <ul style="list-style-type: none"> • with UV Clip-on Light
UVW EW50395	UV Phazer NEO™ 395 UV Leak Detection Light
CPS NITROKITG	A/C Nitrogen Leak Detector Kit

cps® VIEW



REGINA

YORKTON

ESTEVAN

WEYBURN

EMERALD PARK



AUTOMOTIVE PARTS
AUTO BODY SUPPLY

TOOLS & EQUIPMENT
INDUSTRIAL & SAFETY SUPPLY

CPS® Digital Pocket Thermometer

CPS TMDP

- Range: -58° to 302°F / -50° to 150°C
- Stainless steel probe
- Pocket clip



CPS® A/C Flush Gun Kit

CPS TIFG

Used for flushing components on & off the car!

- Simple to use with shop air
- Simply fill the cylinder with flush solution
- Works well on all condensers & evaporators
- Comes with cylinder, hose, and flush gun



A/C Refrigerant Supreme Flush Fluid

CPS AFMSF | 1 gal.

- Removes Leak Stop Polymers
- Fast evaporating
- Ideal for use with major flush machines
- Meets all A/C compressor manuf. req's
 - New & rebuilt
- Bio-Degradable, Non-Corrosive



cps®

CPS® PRO-SET® 4 CFM Vacuum Pump

CPS VPC4SU

- Intake Fittings: 1/4" SAE and 1/2" ACME
- Ultimate Vacuum: as low as 100 microns
- Power: 115V 50/60 Hz USA plug
- Oil Capacity: 10 oz/300 ml
- Weight: 11lbs
- Stage: 1



DON'T FORGET!



Premium Vacuum Pump Oil

CPS VPOQ12 | 1qt

- Can be bought individually or in a case
- Case qty: 12

Red "n" Tacky Grease

- Agricultural/automotive/industrial applications
- Rust & oxidation inhibitors
- Water resistant



Part No.

Size

LUC 20005-30

397g cartridge

LUC 20574

1 lb container

PICO® Cable Ties

- 100 ties per pack
- 7068-HD0C is heavy-duty



Part No.

Length

Tensile Strength

PIC 7065-0C

6"

40 lb

PIC 7066-0C

7.5"

50 lb

PIC 7067-0C

11"

50 lb

PIC 7068-HD0C

15" (HD)

120 lb



Contact Adhesive

HJU SEAL22 | 1 fl. oz

- Fast dry time – set in 10-12 minutes
- Gas, oil, abrasion, temperature, & water resistant



Tire Repair



Part No.

Description

Size

PTR 1010002 Vulcanizing Cement

4oz

PTR 1010004 Buffing Solution

32oz

PTR 1010005 Bead Sealer

32oz

PTR 1010006 Inner Liner Sealer

16oz

PTR 1010008 Mounting Compound Paste

8lb

PTR 1010009 Beam & Rim Sealer Thick Formula

32oz

PTR 1010012 Rim Slip Lubricant

4 L

PTR 1010015 Leak Seeker Concentrate

8oz

Tubeless Rubber Snap-In Valves

PTR 17-415-50 1.25", 0.625" Rim Hole

50 per box

PTR 17-418-50 2", 0.453" Rim Hole

REGINA

YORKTON

ESTEVAN

WEYBURN

EMERALD PARK



**AUTOMOTIVE PARTS
AUTO BODY SUPPLY**

**TOOLS & EQUIPMENT
INDUSTRIAL & SAFETY SUPPLY**



Hand Cleaning Wet Wipes

BUN 192593 | 58 wipes/bucket



Hand & Surface Scrubbing Towels

GOJ 6396-06 | 72 wipes/bucket



SATA Lady Edition II minijet 4400 B

SAT 1160390

- Small and compact
- Low-maintenance, self-adjusting air piston, and paint needle packings
- Promoting the importance of women working in the paint application industry & celebrating their contributions



PPG Clearcoat & Hardeners

- 2.1 VOC Polyurethane High Gloss Clear
- Offers quality performance for collision repair shops with multiple jobs
- Meets the demands of all professional refinishers
- Easy mixing and spraying
- Designed for simplicity and ease of use



Part No.	Description	Size
PPG SC310-01	Acrylic Urethane Clearcoat	1 gallon
PPG SH311-04	Fast Hardener	1 quart
PPG SH312-04	Slow Hardener	

Detailing Essentials



Glass Cleaning



Part No.	Best Application	Size
KLF 885	<ul style="list-style-type: none"> • Body Shop • Industrial 	550g
010 19370292	<ul style="list-style-type: none"> • Automotive • Household 	510g



Slick Mist Car Care Kit

LUC 20558 | 710 ml/bottle

- Kit Includes 1 each of:
- Interior Detailer
 - Tire & Trim Shine
 - Speed Wax
 - Microfiber Towel

Prep, Wash, & Protect



Part No.	Description	Size
KLF 852	Wash'n Wax Liquid	4L
MOT 01224	CMX® Surface Prep	710mL
MOT 01024	CMX® Ceramic Spray Coating	710mL
MOT 01300	CMX® Ceramic Trim Restore & Coat	200mL
MOT 01548	CMX® Ceramic Wash & Coat	1420 mL
MOT 01716	CMX® Ceramic 3-in-1 Polish & Coat	473 mL
MOT 05324	Protectant	710 mL
MOT 05302		1 gallon

Buff & Wipe



Part No.	Description
MOT 05141	PowerBall Mini®
MOT 05146	PowerCone® 360
MOT 37240	California Gold® 3 Clay Bars Kit
PSI 40102	Giant Bone Sponge
PSI 40309	Long Chenille Microfiber Wash Mitt
PSI 45606AS	Microfiber MAX Soft Touch Detailing Towel
PBP 25-617	Auto - Home - Boat Dash Duster
PSI 93007	Pacific Coast Car Duster

Quantities are limited while supplies last. Some items may require ordering. Prices are subject to change without notice.

REGINA

YORKTON

ESTEVAN

WEYBURN

EMERALD PARK



**AUTOMOTIVE PARTS
AUTO BODY SUPPLY**

**TOOLS & EQUIPMENT
INDUSTRIAL & SAFETY SUPPLY**